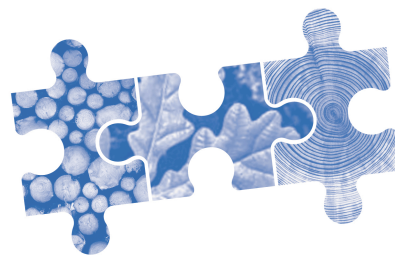


## Felling Trees Over 380mm



*Excellent practical demonstrations with new felling techniques taught.*

*Educational & fun, well organised.*

*Working forestry site with actual objectives. Positive attitudes & teamwork.*

<b>Description</b>	<i>A comprehensive course covering the felling of trees over 380mm, including the use of hand winches for effective takedown of hung up trees. Provides preparation for NPTC assessment 301 (CS 32).</i>
<b>Next Steps</b>	Assessment under NPTC CS32. Benchmark qualifications for work in forestry & arboricultural industry. Allows progression onto NPTC suite of advanced ground and aerial units.

### Objectives

- Identify the risk Assessment and Emergency procedures on a work site
- Organise site safety and state the procedures required
- Assess the trees to be felled for hazards and risks
- Fell trees which have a diameter greater than the effective cutting length of the guide bar but not twice the guide bar length. Guidebar length not greater than 380mm (15")
- Assess a leaning tree and the safest method of felling
- Make accurate felling cuts in the correct positions
- Cross-cut timber accurately to required lengths
- Assess and explain the terms tension and compression in timber
- Adopt safe procedures to remove a trapped guide bar
- Handle and stack timber in a safe manner
- Assess a hung up tree and the safest method of takedown
- Select and prepare equipment required for safe and effective takedown
- Check on the safety of take down tools including hand winches
- Make accurate severing cuts in the correct positions
- Select and use hand tools safety
- Take down hung up trees using hand winches to a safe and stable condition
- State all unsafe practices which must not be adopted